

**Bureau of Land Management  
Hollister Field Office  
Clear Creek Management Area**

**Annual Summary Report for the 2006 – 2007 OHV Use Season  
Monitoring and Status of *Camissonia benitensis*  
and  
Implementation of the 2006 Record of Decision**

This document describes and summarizes ongoing management to protect *Camissonia benitensis* (evening-primrose) occurrences and potential habitat within the Clear Creek Management Area (CCMA). Quarterly reports were completed and forwarded to the Fish and Wildlife Service (FWS) for the time periods October 2006 – December 2006 and January 2007 – March 2007. This report summarizes management activities for the entire OHV use season and incorporates additional information for the months of April and May 2007.

Protecting existing populations of the evening-primrose and attempting to expand its range to areas with moderate and high potential for the species is a high priority of the BLM. The BLM is committed to managing the CCMA to ensure that sensitive species and communities maintain or enhance their condition, while providing for sustainable recreation opportunities. The CCMA reopened to public use October 16, 2006, following a summer dry season closure. The area is currently closed again for the summer dry season (since June 1, 2007). Compliance monitoring was conducted from June 1, 2006 to June 1, 2007 by BLM staff in accordance with the Compliance Monitoring Plan and guidance in the 2005 BO.

**Endangered Species Act Compliance**

BLM analyzed, adopted, and is implementing decisions that conserve and promote the recovery of species listed as threatened or endangered under the Endangered Species Act (ESA). FWS, as the expert agency responsible for regulating ESA compliance, determined that BLM's management at the CCMA is not likely to jeopardize the evening-primrose. By consulting, communicating, and coordinating with FWS, and implementing the management actions identified below, BLM is fulfilling its independent duty to avoid jeopardy under the ESA. FWS' "no jeopardy" opinion was partially based on the continuation of many actions that BLM is currently implementing and will continue to implement in the future, including the following: Implementation Actions (Target 0-2 Years):

**Completed**

- Designate the routes of travel network for casual use with a determination of open closed, or limited.
- Designate barrens as open or closed areas.
- Expand the designation boundary of the San Benito Mountain Research Natural Area (SBMRNA) to 4147 acres.

- Fence, barricade, and sign closed routes which provide access to evening-primrose habitat and other areas of concern (i.e. sensitive species, riparian areas, closed areas, and special management areas), prioritizing areas along the following routes: R010C, R008B.
- Develop barren restoration plan to reclaim closed barrens and minimize erosion and sediment delivery.
- Create and implement new Sign Plan. Place large portal signs at entry points informing visitors of vehicle use restrictions, asbestos public health hazards, and compliance with protective measures for sensitive species habitat.
- Post maps of designated route and barren network on kiosks within the project area.
- Fee collection business plan. Notice of Intent to collect fees was published in the Federal Register on June 27, 2007.
- Construct and maintain kiosks at main access points to the project area.
- Acquire funds to construct new Decontamination Area near entrance to Clear Creek Management Area for BLM (and possible public) use.
- CCMA maps with revised route and area designations posted on kiosks and currently available for purchase by the public.

#### Current Implementation

- Approximately \$600,000 of grant funding was received from the California State OHV Division for projects at CCMA.
- Monitor habitat for the evening-primrose according to the compliance monitoring plan.
- Revise Adaptive Management Compliance Monitoring Plan for the evening-primrose in Coordination with FWS.
- Monitor closed routes for violations and rehabilitation needs according to BMPs. Monitor effectiveness of protection measures and law enforcement techniques
- Use GPS to identify and sign all open and limited route designations and create a database of sign locations and types. Signs will be placed at intersections of open and limited routes. Closed routes may be signed on a priority basis if there are problems with compliance. All routes not signed are closed to OHV use.
- Corridor fence all remaining routes through any closed mine areas. Fence routes through closed barren areas as determined by BLM and FWS.
- Fence, barricade, and sign closed routes which provide access to evening-primrose habitat and other areas of concern (i.e. sensitive species, riparian areas, closed areas, and special management areas), prioritizing areas along the following routes: OR642, T104, T105, T107, T115, T135, T218, T165, T241, and T261. Protective measures enlarging evening-primrose exclosures will be implemented as determined by BLM and FWS to encompass the entire habitat polygon. This measure is intended to ensure protection of evening-primrose and its habitat by accommodating movement of the footprint of occupied habitat over time, and may require minor modifications of the route network
- Continue implementing inventory and assessment of all designated routes in accordance with State soil loss protocols. Implement protocol for monitoring soils, vegetation, and species of concern.
- Continue to perform annual recurring and corrective route maintenance and implement Best Management Practices (BMPs) according to Route Maintenance Objectives (RMO) for specific trail types based on the results of the soil loss assessment. A plan will be developed to implement BMPs on stream crossings on the designated route system.

- Conduct route restoration activities on closed routes and obscure routes with vertical mulching.
- Rehabilitate new illegal routes as they are discovered.
- Monitor soil erosion and sediment yield to streams through Clear Creek gauging station. Implement soil erosion control measures, silt fences, and sediment trapping features.
- Purchase, rotate, and monitor traffic counters. Log time of use, and monitor use patterns to include remote portions of the project area.
- Continue existing, and explore new outreach approaches to contact visitors with brochures, maps, and information. Continue to emphasize the ‘Leave No Trace’ and the ‘Tread Lightly’ programs.
- Construct new entrance booth for information and collection of fees.

### Planned

- Prepare Research Natural Area Management Plan for the SBMRNA and prevent trespass and impairment of values for which established.
- Complete inventory of all routes not in the current database. Evaluate routes through the established screening criteria. Providing routes meet the criteria and contribute to the route network they may be added to the route system within the thresholds identified in this plan amendment.
- Identify closed routes and implement restoration plan for reclamation to return to a natural state and trend towards background erosion rates.
- Develop and implement plan to sign routes of travel by levels of technical difficulty to better meet the needs of the public’s range of skill and enjoyment and to promote safety.

### **Implementation of the 2006 CCMA ROD**

Implementation of the decisions in the ROD is occurring according to timelines outlined in the ROD.

#### 1). *Management of Off-Highway Vehicle Recreation*

In its RMP Amendment and ROD, BLM designated a route network of 242 miles. During implementation of the designated route network, unsigned designated open routes and areas will remain closed until signed. This network reflects a reduction in the overall miles of routes, and in particular, significant reductions in the number of stream crossings, and in miles of routes associated with riparian and sensitive species habitat areas. The route network conforms to target mileages and route locations analyzed in the 2005 BO.

Since adoption of the 2006 ROD, a total of 1150 brown directional/route markers have been installed along the reassessed routes. Forty-two routes have been closed, ripped to relieve compaction, restored, vertically mulched to obscure entrances, and signed as closed. Additionally, a total of 120 red markers have been installed designating other closed areas. Currently, approximately 180 miles of the route network are signed, with 68 of those miles having been resigned from the old standards to the current standards. A total of seven open play area boundaries have been signed along R2 and R5. Approximately 60 miles of routes and six open play areas remain to be signed (approximately 1800 markers).

Closed route R8B was ripped, restored, signed as closed, and gated at either end. Additionally, a corridor fence was installed where T135 crosses R8B in order to prevent OHV trespass in to Potential CAGE habitat at that point. A short section (0.5 mile) of T151 near its departure from R8 was rerouted around private property and the old closed route was ripped on public property, signed as closed, and gated at either end. Another ¾ mile section of T151 was rerouted around private property and the closed portion on public land was ripped, had water management features placed appropriately, and was vertical and horizontal mulched and fenced from its intersection with T158/Sawmill Creek Road. Fences were installed along extensive stretches of R2 (south of Larios Canyon; **Photo 1**), R14 (Aurora Mine; northeastern boundary of the SBMRNA; **Photo 2**), and R11 (“The Bowl”; southeastern boundary of the SBMRNA; **Photo 3**) to prevent OHV entry to closed areas, the SBMRNA, and potential evening-primrose habitat. Numerous wing fences (18 total) were installed across closed trespass routes in the vicinity of Larios Canyon.

**Photo 1.** New fencing along R2 to prevent OHV entry to closed area and potential habitat in Larios Canyon (canyon to the right of the fence).



**Photo 2.** New fencing along R14 to prevent OHV entry to closed area (Aurora Mine) and the SBMRNA.



**Photo 3.** New fencing along R11 to prevent OHV entry to closed area “The Bowl” along the southeastern boundary of the SBMRNA.



BLM acknowledges that a certain degree of non-compliance with the route designations continues to occur. BLM will continue to install signs and construct barriers to control OHV use in areas where off route vehicle travel is discovered. Visitor compliance with use restrictions, signage, barriers, and fencing has been steadily improving. User compliance with the designated route network has been very high. As use patterns continue to change over time as a result of signing, education, barrier construction, and enforcement, compliance with the route and area designations adopted in the 2006 ROD will continue to improve.

Closed routes and areas are being prioritized for restoration. BLM restoration activities are continuing to reclaim closed barrens, minimize erosion and sediment delivery, and preclude access in the SBMRNA. A barren restoration plan was developed in 2005 for the RNA. Planning involved several site visits, GPS work, air photo analysis, mapping, photo point monitoring, materials procurement, project scheduling, and record keeping. Significant work was accomplished in 2007 at Polygon 25 (Dynamac designation) on the eastern edge of the SBMRNA. Years of motorcycle impacts have resulted in the formation of deep gullies. More than 80 straw bales and several straw rolls were installed within the gullies to reduce erosion and capture sediment (**Photo 4**). Further barrens restoration work, including revegetation, is planned for 2008.

**Photo 4.** Polygon 25 barrens restoration. Note workers installing straw bale check dams near the top center of the barren for scale.



Four Special Recreation Permit (SRP) events were scheduled for the CCMA this use season. Thorough environmental review was conducted to analyze the potential impacts to the quality of the human environment pursuant to NEPA for all proposed events within the CCMA. Analysis of the direct environmental impacts from the use of routes for organized recreational events takes place on a case by case basis, as requests for such use are made to the BLM from the public. As a condition of approval, mitigation measures are developed and employed when necessary to avoid adverse impacts to resources, and BLM retains the discretion to deny requests for SRP events if warranted. Authorized use of routes will not occur in areas where the BLM determines that

mitigation of potential impacts to sensitive resources is not possible. Permittees are required to post a bond to ensure that corrective maintenance activities take place following the authorized use. This office completed environmental assessments for the four special recreational events and determined the use of the routes would not adversely impact rayless layia (*Layia discoidea*) or evening-primrose populations or habitat. Photomonitoring was conducted before and after the event for rayless layia habitat polygons adjacent to the event course. Monitoring documented that no adverse impacts occurred to rayless layia populations or habitat .

Pursuant to 43 C.F.R. §§ 8364.1 , 8341.2 and the Federal Register Notice dated February 4, 2000, the Clear Creek Management Area is subject to emergency closure (wet-season closure) when rainfall exceeds ½ inch in 24 hours or 1 inch in 72 hours. Closures are intended to protect natural resources and provide for public safety during periods of intense rainfall and muddy conditions. The area remains closed for a minimum of three days during these closures, and closures can be extended beyond that time if area and weather conditions dictate such an extension. Remote automated rain gauges and on-site condition assessments are used to determine the timing and extent of closures beyond the minimum 3-days. Due to the ongoing drought in the region, there were no CCMA wet-season closures this season.

BLM issued a dry-season closure order for the CCMA from June 1, 2007, through October 15, 2007, to reduce the human health risk associated with asbestos in the Serpentine ACEC. This action is in accordance with the 2005 FEIS and RMP Amendment and 2006 ROD for the CCMA. The primary goal of these use restrictions is to reduce public exposure to airborne asbestos during motorized and non-motorized activities.

## 2). *Protection of Evening-primrose*

Protective fencing is planned for construction from the intersection of R5 with T117 to 0.5 miles east of that point to prevent motorcycles from short-cutting from T117 to R1 which is currently resulting in significant disturbance and erosion uphill of potential evening-primrose habitat. Protective fencing is also planned for construction on both the north and south sides of T153 from the southeastern intersection of R11 with T153, northwest to San Carlos peak. This will prevent motorcycle entry into closed areas of the San Carlos Creek watershed in the SBMRNA and impacts on evening-primrose potential habitat, as well as the talus fritillary (*Fritillaria falcata*) population at San Carlos peak.

In recent decades, yellow starthistle (*Centaurea solstitialis*) has invaded lands within the Clear Creek watershed on the west side of the CCMA. The species threatens to invade evening-primrose and slender pentachaeta (*Pentachaeta exilis* ssp. *aeolica*) habitat. Public lands infested with yellow starthistle in the CCMA were sprayed with Transline by ATV spray boom between March 1 and April 1, 2007. The treatment was highly effective at reducing the numbers of yellow starthistle. The same lands (30 acres) were subsequently subject to prescribed burn on June 13, 2007 to kill remaining live yellow starthistle. A similar burn was conducted in 2006. The long-term goal related to weed management for yellow star-thistle is to treat this area with Transline herbicide in spring, followed by prescribed burn in summer to deplete the yellow starthistle seed bank. Burned areas will be seeded with a mix of native grasses (purple needlegrass, blue wildrye, California brome) in fall to promote the restoration of native perennial

grasslands. The establishment of deep-rooted native perennial grasses should outcompete yellow starthistle and reduce the capacity for spread of it and other invasive species in the future.

### 3). *OHV Compliance Monitoring for the Evening-primrose*

This report covers the monitoring period from June 1, 2006 to June 1, 2007. Compliance Monitoring Reports have been sent to the FWS on a quarterly basis. Monitoring is being conducted at 44 individual sub-occurrences and monitoring frequency is on schedule, with three or more employees participating. BLM has increased habitat compliance monitoring for high-priority sites to bi-monthly. Monitoring of protection measures for high-priority sites occurs weekly. Monitoring has been completed to date in accordance with the monitoring plan which was revised in October, 2005. Baseline conditions were established in all high-priority sub-occurrence sites in October. Photomonitoring was conducted before the CCMA reopened October 16 and after it closed on May 31. See **Appendix 1** for before opening (October 12) and after closure (June 1) photomonitoring comparison. See **Appendix 2** for OHV Compliance data. Overall, compliance with protection measures and prevention of trespass in habitat areas for the evening-primrose has continued to improve with two instances of non-compliance in occupied habitat and seven instances of non-compliance in potential habitat documented this season.

Two instances of non-compliance in occupied habitat were documented this season. They consisted of a single motorcycle track each through sub-occurrences 281100 (1C/Culvert camp; **Photo 5**) and 181100 (Private Land, KCAC Road/Sawmill Creek Junction; **Photo 6**). No additional incidents have been recorded at the sites.

**Photo 5.** Sub-occurrence 281100. Single motorcycle track trespass.



**Photo 6.** Sub-occurrence 181100 (Private land). Single motorcycle track trespass.



Seven instances of non-compliance in potential habitat, two of which are on private land, have been documented this season. On November 12, 2006, it was noted that a section of fence adjacent to R1 was down. A single set of ATV tracks were noted within the potential habitat of 81000. The downed section of fence was repaired and the tracks were brushed.

Two separate motorcycle tracks were noted in potential habitat of 121100 in upper Clear Creek Canyon on March 6, 2007. A single set of motorcycle tracks was later noted within the same potential habitat on May 3, 2007.

On May 21, 2007, a single set of 4WD tracks were noted within potential habitat (river bed) of 291500 at the San Benito River crossing immediately east of Coalinga Road-R1 intersection. Multiple sets of both motorcycle and 4WD tracks were later noted at the same location on May 31, 2007.

On May 21, 2007, motorcycle tracks were noted within potential habitat of 81200 near Staging Area 5 and 101100 (Private land) in upper San Benito River (KCAC Road). Trespass in potential habitat at 81200 consisted of more than three separate motorcycle tracks. A single motorcycle track was noted in potential habitat at 101100.

The results of fence monitoring are documented in the compliance monitoring records (**Appendix 2**). If protective measures (fencing, etc.) are compromised, appropriate personnel are notified immediately to commence repairs.

The law enforcement program is a key component of the successful implementation of the ROD. Outreach and education is a major portion of the daily duties of the four LE Rangers. While

patrolling the CCMA, LE Rangers spend significant time speaking with the public and informing them of the rules and regulations. LE Rangers make contact with as many visitors and camps as possible, providing visitors the chance to ask questions and educating the public about use restrictions and the importance of complying with the restrictions. On average LE Rangers make over 200 personal contacts each weekend. Between October 16, 2006 and May 31, 2007, a total of 63 citations were issued, most for riding within closed areas. LE Rangers are aggressively enforcing illegal OHV riding and violations with respect to the designated route network. BLM is committed to increasing law enforcement presence at the CCMA and aggressively enforcing route designations.

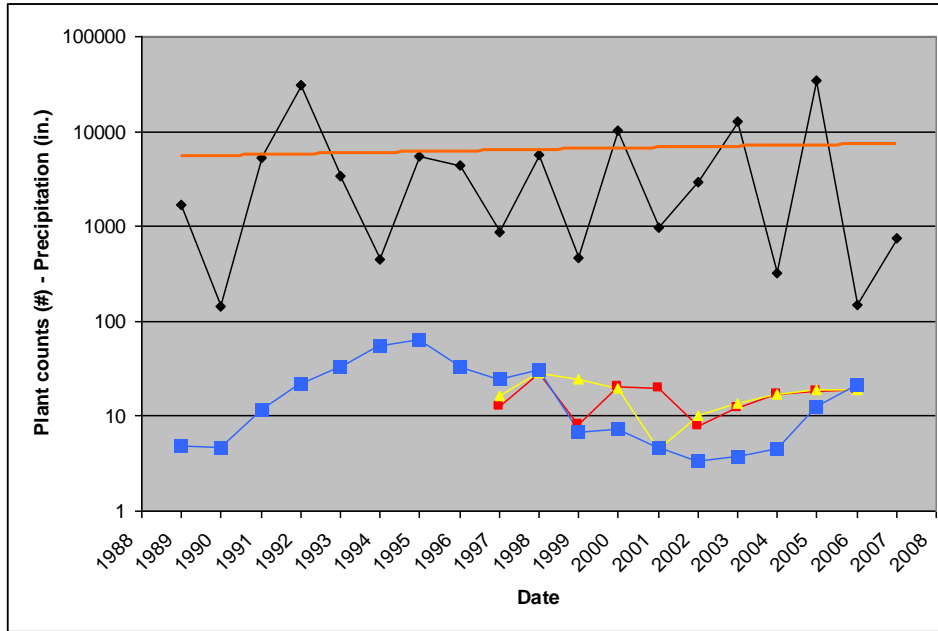
4) Evening-primrose plant counts

Population counts were conducted by the Hollister BLM botanist in April 2007. The 2007 total *Camissonia benitensis* count was 1188 (**Table 1**). An ongoing extreme drought in the region likely had a negative impact on plant productivity, however, plant numbers are still greater than that of 2006 when total precipitation was average. The species is currently emerging from a population “bust.” *Camissonia benitensis* undergoes repetitive population “boom-bust” cycles (one cycle every 3 to 5 years) that appear to be independent of climatic factors such as precipitation (**Figure 1**). Overall, the species plant numbers are stable and are actually increasing slightly as indicated by the trendline (orange). It is currently unclear what abiotic or biotic factors are driving the boom-bust cycles and should be the focus of future research.

**Table 1.** *Camissonia benitensis* plant counts by sub-occurrence for 2005, 2006, and 2007.

Sub-Occurrence	2005	2006	2007	Sub-Occurrence	2005	2006	2007
11100	700	0	0	122100	0	0	0
21100	15	10	0	131100	0	0	0
21200	600	0	0	141100	0	0	0
21300	150	0	5	151100	.	.	.
21400	500	30	70	161100	.	.	0
31100	100	20	245	161200	.	0	0
41100	1660	0	0	181100		0	0
41200	0	0	0	191100	500	.	60
51100	5000	0	113	201100	130	0	0
51200	10000	0	146	201200	50	0	0
51300	50	0	0	201300	210	0	0
51400	0	0	0	201400	200	0	0
51500	0	0	0	201500	150	0	0
61100	107	14	73	221000	.	.	.
61200	30	0	0	221100	.	.	.
71100	210	.	0	241000	.	.	.
71200	190	.	0	251100	296	0	0
71300	0	.	36	261100	70	0	0
71400	0	.	3	271100	150	24	0
81100	43	0	0	281100	20	0	0
81200	11	0	152	291100	2500	25	0
91100	13077	100	247	291200	860	7	0
91200	90	12	23	291300	280	12	15
101100	100	30	0	291400	860	0	0
111100	2500	0	0	291500	120	0	0
121100	14	0	0	<b>TOTAL</b>	<b>41543</b>	<b>284</b>	<b>1188</b>

**Figure 1.** *Camissonia benitensis* plant counts 1989 – 2007 for the 15 sub-occurrences (11100, 21200, 31100, 41100, 51100, 51200, 51400, 51500, 81100, 91100, 101100, 111100, 121100, 131100, 141100) for which continuous counts have been made since 1989. **Black points** – Total annual plant count; **Orange line** – Plant count trendline; **Red line** – Annual precipitation for Hernandez; **Yellow line** – Annual precipitation for Santa Rita; **Blue line** – Annual precipitation for Spanish Lake.



### 5). *Visitor Registration and Education*

Self-registration stations are present at both primary entrances (R1 and R11-R14 intersection) to the CCMA. Additionally, the visitor contact station (R1 entrance) is frequently manned by an LE Ranger in the mornings when the majority of visitors enter Clear Creek. On weekends, as many as six personnel are present at the visitor station to register and inform visitors. Over 4500 vehicles have been registered with approximately 6,000 visitors contacted while entering the area since October 16, 2007. This represents approximately 1/4 of the total visitors to the CCMA. During registration, visitors are educated on the importance of respecting fenced and signed closed areas, and management changes and route designations. A newly revised CCMA map featuring open routes and open areas became available to the public on March 15, 2007. The map is posted on kiosks throughout the CCMA and approximately 700 maps have been purchased by the public to date.

The following visitor information is derived from on-site registration and remote traffic counter data:

<b>DATE</b>	<b># Visitors</b>
October 16-October 31:	700
November:	1300
December:	1800
January:	5500
February:	4000
March:	4200
April:	2600
May:	1600
<b>TOTAL:</b>	<b>21,700</b>

Additional education efforts include; 1) large 4' x 4' signing at access points and other locations identifying the CCMA as a "Limited Use Area" with all vehicle travel restricted to signed and numbered routes, 2) monthly Newsletters that inform users of implementation of the ROD and vehicle travel restrictions, and which continue to discuss protection of the evening-primrose, 3) the Hollister Field Office website, and 4) the Hollister Field Office Hot-line that provides 24-hour access to information, updates, and access restrictions.

A business plan for fee collection has been completed with collection of fees scheduled to commence on December 27, 2007. A Notice of Intent to collect fees at the CCMA was published in the Federal Register on June 27, 2007. Fee collection will include mandatory registration of all users. Violations would be subject to citation and fine by LE Rangers.

### **Planned Work**

Key planned work items for the next year include:

- Complete signing of the designated route network.
- Complete signing of the remaining open barren areas.
- Monitor closed routes for violations and rehabilitation needs according to BMPs. Monitor effectiveness of protection measures and law enforcement techniques
- Corridor fence remaining routes through closed mine and barren areas as needed.
- Expand protective measures for the evening-primrose to encompass the entire habitat polygon where needed. This measure is intended to ensure protection of the species and its habitat by accommodating movement of the footprint of occupied habitat over time, and may require minor modifications of the route network
- Continue implementing inventory and assessment of all designated routes in accordance with State soil loss protocols. Implement protocol for monitoring soils, vegetation, and species of concern.
- Continue to perform annual recurring and corrective route maintenance and implement Best Management Practices (BMPs) according to Route Maintenance Objectives (RMO) for specific trail types based on the results of the soil loss assessment. Develop plan to implement BMPs on stream crossings on the designated route system.









- Identify closed routes and implement restoration plan for reclamation to return to a natural state and trend towards background erosion rates. Conduct route restoration activities on closed routes and obscure routes with vertical mulching. Rehabilitate new illegal routes as they are discovered.
- Continue barren restoration project to implement erosion control measures to stabilize soils and promote re-vegetation.
- Removal of old restroom at Staging Area 5. Close this staging area and restore habitat conditions to provide additional suitable habitat for the evening-primrose.
- Implement Fee program.

## **Conclusion**

BLM has implemented substantial protective measures to ensure the protection of the San Benito evening-primrose. BLM's continuing management is meeting the requirements of the Endangered Species Act by protecting and promoting the productivity of the evening-primrose and all other listed species in the CCMA. BLM will continue to protect habitat for the evening-primrose through appropriate management and restoration activities, including managing the designated route network to direct OHV use away from sensitive areas and conducting soil loss assessment, corrective route maintenance, restoration of closed trails, protecting specific occurrences of the evening-primrose, increasing levels of enforcement and compliance monitoring, and restoration of damaged habitat.

The FWS has agreed that BLM's management of the CCMA will not jeopardize the continued existence of listed species, including the evening-primrose. BLM has implemented substantial protective measures towards accomplishing resource condition objectives related to the evening-primrose. Monitoring has documented that implementation of the designated route network, instituting protection measures for the evening-primrose and increased inspections of those measures, increased law enforcement, and visitor education, have been highly effective in eliminating OHV non-compliance in habitat areas for the evening-primrose subsequent to issuance of the ROD. BLM will continue to coordinate with FWS on implementation of adaptive management actions, development of population and habitat monitoring protocols, OHV and other recreational use compliance monitoring and erosion process studies and control strategies. BLM and FWS will continue to work together to review and evaluate population and compliance monitoring data, and to evaluate the implementation of the CCMA designation plan and assess the effectiveness of management strategies.

Appendix 1. OHV Compliance photomonitoring.

October 12, 2006	Sub-Occurrence	June 1, 2007
	----11100----	
	----21100----	
	----21200----	
	----21300----	



----21400----



----31100----



----41100----



----41200----





----51100----



----51200----



----51300----



----51400----





----51500----



----61100----



----61200----



----81100----





---81200---



---91100---



---91200---



---101100---





---111100---



---121100---



---122100---



---131100---





---141100---



---181100---



---201100---



---201200---





---201300---



---201400---



---201500---



---251100---





---261100---



---271100---



---281100---



---291100---





---291200---



---291300---



---291400---



---291500---





Descriptor	Occ/ Subocc	UTM N	Date→ Initials→ UTM E	6/19-	7/5-	8/24-	9/1	9/21	10/12	10/28	11/10-	11/21	12/11-	1/4	1/20	2/2	2/20	3/6	3/12	3/20	3/21	3/27	4/5	4/24	4/28	5/3	5/13	5/21	5/31	6/1	
				HG/ DM	HG/ DM/ BW	HG/ DM	HG/ BW	HG/ DM/ BW	HG/ DM	HG/ DM	HG/ DM	HG	HG/ DM	HG	DM	HG	DM	HG	DM	HG	DM	HG	DM	HG	DM	HG	DM	HG	DM	DM	HG
4/S Slot	41000/ 41100	4028924	704658	√	√	√	√	√	√	√	√	√	√	√	√	√	√	√	√	√	√	√	√	√	√	√	√	√	√	√	√
16/S Slot intro	41000/ 41200	4028818	704730	√	√	√	√	√	√	√	√	√	√	√	√	√	√	√	√	√	√	√	√	√	√	√	√	√	√	√	√
POTENTIAL HABITAT				√	√	√	√	√	√	√	√	√	√	√	√	√	√	√	√	√	√	√	√	√	√	√	√	√	√	√	√
6/Trail bisects	51000/ 51100	4028590	705115	√	√	√	√	√	√	√	√	√	√	√	√	√	√	√	√	√	√	√	√	√	√	√	√	√	√	√	√
5/mega	51000/ 51200	4028573	705025	√	√	√	√	√	√	√	√	√	√	√	√	√	√	√	√	√	√	√	√	√	√	√	√	√	√	√	√
New/saddle btwn 5-7	51000/ 51300	4028448	705091	√	√	√	√	√	√	√	√	√	√	√	√	√	√	√	√	√	√	√	√	√	√	√	√	√	√	√	√
7/Indian Hill	51000/ 51400	4028403	705385	√	√	√	√	√	√	√	√	√	√	√	√	√	√	√	√	√	√	√	√	√	√	√	√	√	√	√	√
17/Intro beyond Indian Hill	51000/ 51500	4028502	705659	√	√	√	√	√	√	√	PTL	√	√	√	√	√	√	√	√	√	√	√	√	√	√	√	√	√	√	√	√
POTENTIAL HABITAT				√	√	√	√	√	√	√	√	√	√	√	√	√	√	√	√	√	√	√	√	√	√	√	√	√	√	√	√
8/Stage 5 chap	81000/ 81100	4028444	706013	√	√	√	√	√	√	√	√	√	√	√	√	√	√	√	√	√	√	√	√	√	√	√	√	√	√	√	√
8.5/Stage 5 rest	81000/ 81200	4028395	706057	√	√	√	√	√	√	√	√	√	√	√	√	√	√	√	√	√	√	√	√	√	√	√	√	√	√	√	√
POTENTIAL HABITAT				√	√	√	√	√	√	√	√	√	√	√	√	√	√	√	√	√	√	√	√	√	√	√	√	√	PTH	√	√
12/Upper CC Cyn,	121000/ 121100	4027848	708877	√	√	√	√	√	√	√	√	√	√	√	√	√	√	√	√	√	√	√	√	√	√	√	√	√	√	√	√
23/Upper CC, first approach	121000/ 122100	4028005	708491	√	√	√	√	√	√	√	√	√	√	√	√	√	√	√	√	√	√	√	√	√	√	√	√	√	√	√	√
POTENTIAL HABITAT				√	√	√	√	√	√	√	√	√	√	√	√	√	√	PTM	√	√	√	√	√	√	√	√	PTL	√	√	√	√
Larious Trib	61000/ 61100	4030910	702788	√	√	√	√	√	√	√	√	√	√	√	√	√	√	√	√	√	√	√	√	√	√	√	√	√	√	√	√
Larious Trib	61000/ 61200	4030630	702916	√	√	√	√	√	√	√	√	√	√	√	√	√	√	√	√	√	√	√	√	√	√	√	√	√	√	√	√
POTENTIAL HABITAT				√	√	√	√	√	√	√	√	√	√	√	√	√	√	√	√	√	√	√	√	√	√	√	√	√	√	√	√
KCAC/Sawmill Cr. (PVT)	181000/ 181100	4024476	710161	√	√	√	√	√	√	√	√	√	√	√	√	√	√	√	√	√	√	√	√	√	√	√	√	√	√	√	√
POTENTIAL HABITAT				√	√	√	√	√	√	√	√	√	√	√	√	√	√	√	√	√	√	√	√	√	√	√	√	√	√	√	√
Upper SB upstrm (PVT)	261000/ 261100	4023394	712559	√	√	√	√	√	√	√	√	√	√	√	√	√	√	√	√	√	√	√	√	√	√	√	√	√	√	√	√
POTENTIAL HABITAT				√	√	√	√	√	√	√	√	√	√	√	√	√	√	√	√	√	√	√	√	√	√	√	√	√	√	√	√
10/Upper SB downstream	101000/ 101100	4023928	711732	√	√	√	√	√	√	√	√	√	√	√	√	√	√	√	√	√	√	√	√	√	√	√	√	√	√	√	√
POTENTIAL HABITAT				√	√	√	√	√	√	√	√	√	√	√	√	√	√	√	√	√	√	√	√	√	√	√	√	PTL	√	√	√



**OHV NON-COMPLIANCE RUNNING TOTALS**

Location	6/19-6/20	7/5-7/28-8/23	8/24-9/1	9/21	10/12	10/28	11/10-11/12	11/21	12/11-12/14	1/4	1/20	2/2	2/20	3/6	3/12	3/20	3/21	3/27	4/5	4/24	4/28	5/3	5/13	5/21	5/31	6/1
Sub-occurrence BLM	0	0	0	0	0	0	0	0	0	0	0	0	0	0	0	0	0	0	0	0	1	1	1	1	1	1
Sub-occurrence PVT	0	0	0	0	0	0	0	0	0	0	0	0	0	0	0	0	1	1	1	1	1	1	1	1	1	1
Potential BLM	0	0	0	0	0	0	1	1	1	1	1	1	1	1	1	1	1	1	1	1	1	2	2	4	5	5
Potential PVT	0	0	0	0	0	0	0	0	0	0	0	0	0	1	1	1	1	1	1	1	1	1	1	2	2	2

**LEGEND**

Initials: DM = David Moore; HG = Harrison Gruman; BW = Brian White

- = Sub-occurrences/Potential habitat on BLM land
- = Sub-occurrences/Potential habitat on Private land
- POTENTIAL HABITAT = Potential habitat occurs on both BLM and Private land

= Monthly monitoring per biological opinion

√ = OHV Compliance

**NA** = No access

**OTL** = Occupied habitat, track, one incident

**OTM** = Occupied habitat, track, two incidents

**OTH** = Occupied habitat, track, three or more incidents

**PTL** = Potential habitat, track, one incident

**PTM** = Potential habitat, track, two incidents

**PTH** = Potential habitat, track, three or more incidents

Numbers reflect the OHV non-compliance (compliance) in protected *Camissonia benitensis* habitat per monitoring visit.

Numbers of monitoring visits vary year to year due to weather and accessibility.

Annual monitoring begins June 1 and ends June 1 the following calendar year.

**Appendix 3.** Fence monitoring data. R1, T151, R8, R11, R10, Larious Canyon, and Tunnel 'O Trees were monitored weekly. R15, R5, T124, T117, and T147 were monitored bi-monthly. √ = good condition, X = fence break/trespass.

Route fence	9/30	10/12	10/21	10/28	11/5	11/12	11/21	11/29	12/11	12/19	1/4	1/13	1/20	2/2	2/13
R1	√	√	√	√	√	X	√	√	√	√	√	√	√	X	√
T151	√	√	√	√	√	√	√	√	√	√	√	√	√	√	√
R8	√	√	√	√	√	√	√	√	√	√	√	√	√	√	√
R11	√	√	√	√	√	√	√	√	√	√	√	√	√	√	√
R10	√	√	√	√	√	√	√	√	√	√	√	√	√	√	√
Larious Canyon	√	√	√	√	√	√	√	√	√	√	√	√	√	√	√
Tunnel 'O Trees	√	√	√	√	√	√	√	√	√	√	√	√	√	√	√
R15	√		√		√		√		√		√		√	√	
R5	√		√		√		√		√		√		√	√	
T124	√		√		√		√		√		√		√	√	
T117	√		√		√		√		√		√		√	√	
T147	√		√		√		√		√		√		√	√	

Route fence	2/20	2/27	3/6	3/15	3/20	3/28	4/3	4/19	4/24	4/28	5/3	5/11	5/19	5/21	5/31
R1	√	√	√	X	X	√	√	√	X	√	√	X	X	√	√
T151	√	√	√	√	√	√	√	√	√	√	√	√	√	√	√
R8	√	√	√	√	√	√	√	√	√	√	√	√	√	√	√
R11	√	√	√	√	√	√	√	√	√	√	√	√	√	√	√
R10	√	√	√	√	√	√	√	√	√	√	√	√	√	√	√
Larious Canyon	√	√	√	√	√	√	√	√	√	√	√	√	√	√	√
Tunnel 'O Trees	√	√	√	√	√	√	√	√	√	√	√	√	√	√	√
R15	√		√		√	√		√						√	
R5	√		√		√	√		√				√		√	
T124	√		√		√	√		√						√	X
T117	√		√		√	√		√						√	
T147	√		√		√	√		√						√	

- X R1 11/12 – Fence knocked down, single set of ATV tracks in occurrence 81000. Repaired fence, brushed tracks.
- X R1 2/2 – Fence knocked down, no trespass. Occurrence 81000. Repaired fence.
- X R1 3/15 – Fence knocked down, no trespass. Occurrence 81000. Repaired fence. Closure sign installed.
- X R1 3/20 – Fence cut, multiple motorcycle tracks. South side of R1, before R5. Repaired fence.
- X R1 4/24 – Fence cut, multiple motorcycle tracks. South side of R1, before R5. Repaired fence.
- X R1 5/11 – Multiple fence cuts, multiple motorcycle tracks. Repaired fence.
- X R1 5/19 – 4WD tracks in Clear Creek. Brushed tracks.
- X T124 5/31 - Fence cut, no trespass. Repaired fence.